

# INDUSTRIAL THERMOMETER

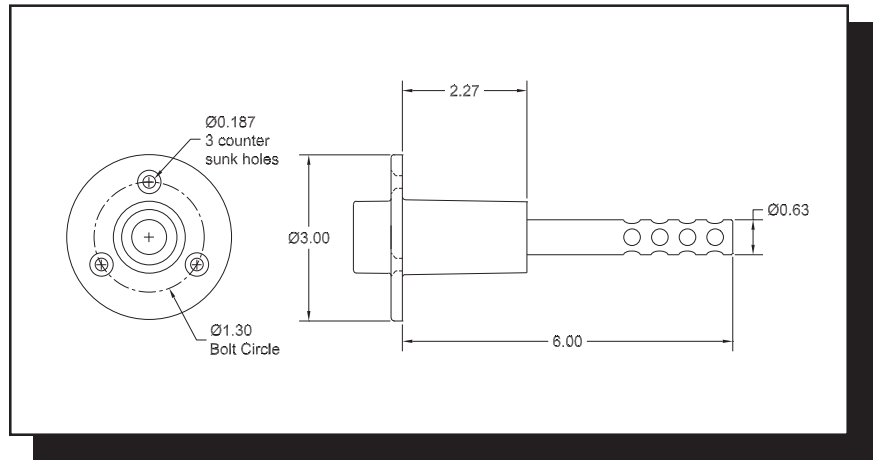
## Options & Accessories

### Air-Duct Stem

Miljoco offers an air-duct stem on both the liquid-in-glass and solar digital thermometers. This stem is designed to provide maximum accuracy and response time for thermometers that are to be installed in ducts and other air-temperature measurement applications.

Model	Scale Size
SX7AD06	7"
SX9AD06	9"
CDX9AD06	Solar

*Refer to pages 34-35 for full dimensional drawings.*



### Optional Features & Accessory Items

Code	Feature	Description
G	Glass Lens	Double strength glass lens on Models SX7 & SX9.
BS	Brass Stem	Brass stem on Models SX7 & SX9.
SS	Stainless Steel	304 stainless steel stem on Models SX7 & SX9.
46-1	Waterproof Cover	Clear waterproof cover for Model CDX9.

*Specify the optional feature code when ordering. Stainless steel and brass connection bushings are also available for use with optional stainless steel and brass stems - consult factory for details.*

### Thermowell Adapter Kit

This easy-to-use adapter kit is designed to fit precisely within an industrial thermometer well. Simply thread the adapter into the well, remove the plug, and install a Miljoco Bimetal Thermometer of the appropriate stem length. The adapter kit is furnished complete with heat transfer paste to provide the fastest response time of the thermometer.

Model	Industrial Thermowell Number	Bimetal Thermometer Stem Length
BK35	W35_ / W351_	4"
BK60	W60_ / W62_	6"

